

Sustainable Groundwater Management Act

Continuing Drought Impacts

Water Conservation and Use Restrictions

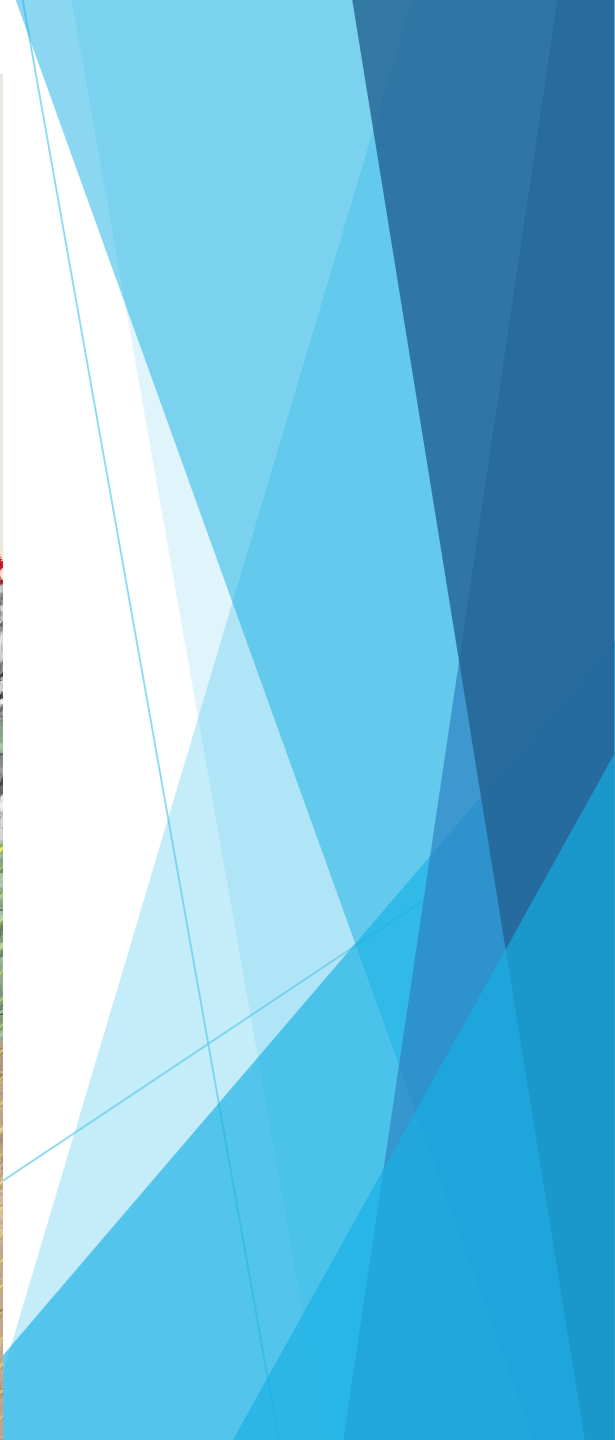
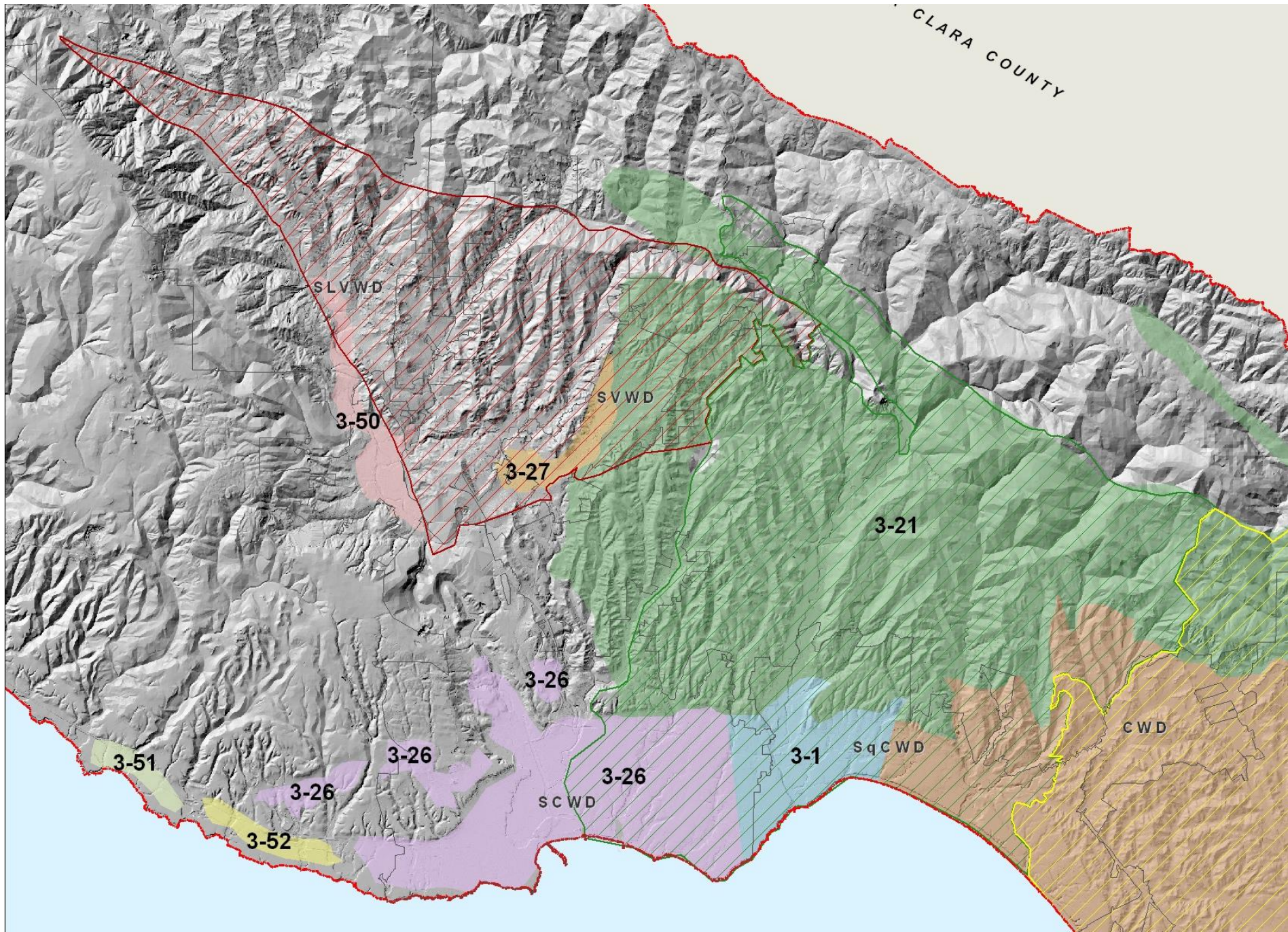
Metering and Reporting

Small Water System Forum - March 24, 2015

John Ricker, Water Resources Division Director

Sustainable Groundwater Management Act of 2014

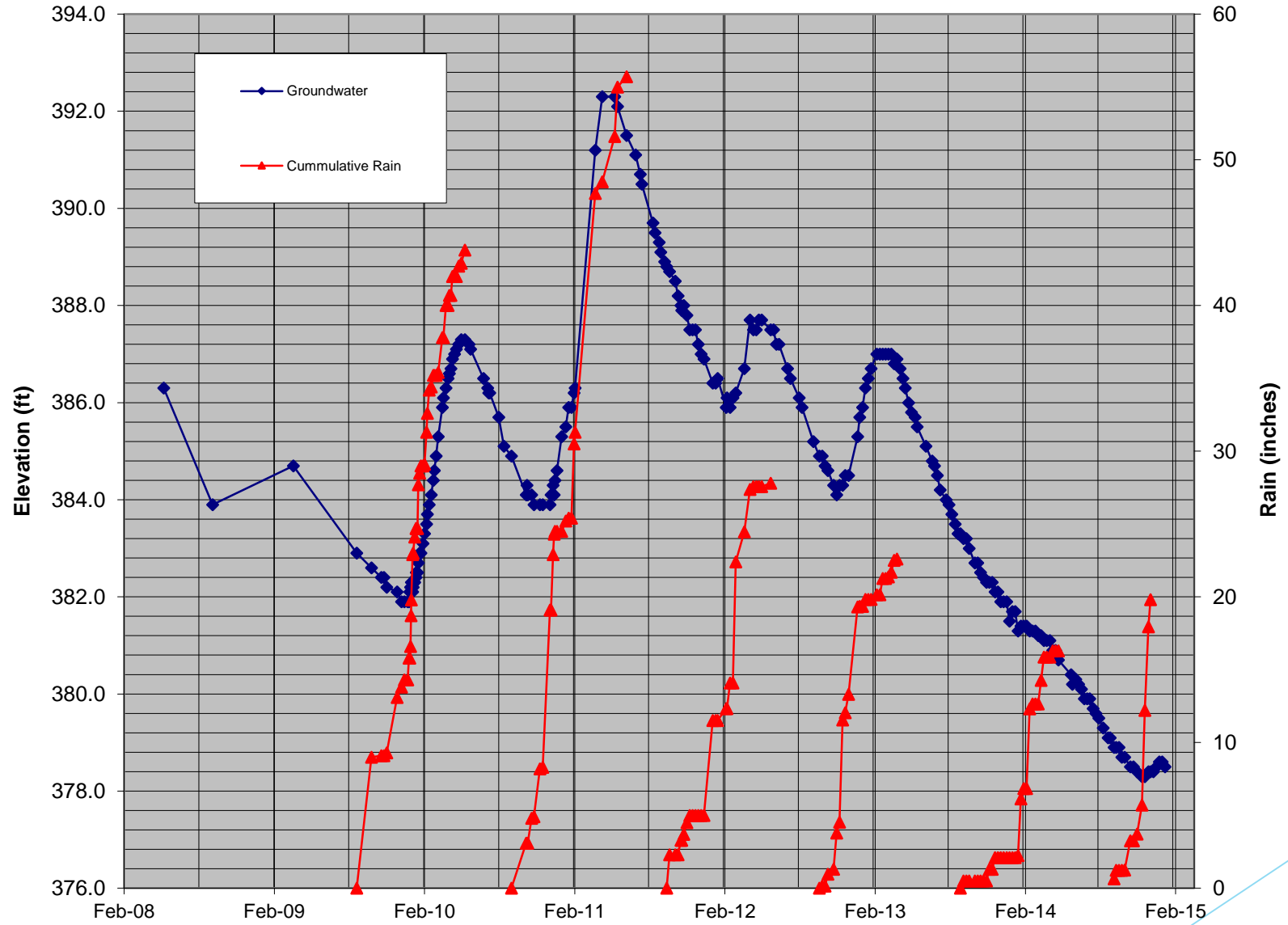
- ▶ Develop and implement a plan that will prevent undesirable results:
 - ▶ Chronic lowering of groundwater levels
 - ▶ Significant, unreasonable reductions in storage
 - ▶ Significant, unreasonable degradation of water quality, seawater intrusion
 - ▶ Significant, unreasonable depletion of surface water
- ▶ Local agency or combination of agencies may form Groundwater Sustainability Agency (GSA)
- ▶ GSA may measure and limit extraction, impose management fees, enforce the terms of the groundwater sustainability plan
- ▶ Involvement of Stakeholders
- ▶ Coordination with land use agencies
- ▶ Funding and technical assistance
- ▶ State oversight and action if locals fail to act



Continuing Drought

- ▶ Impacts last year:
 - ▶ Declining streamflow and water quality
 - ▶ Groundwater levels held up despite recharge
- ▶ Continued High Level of State Interest
 - ▶ Reports of Water System Conditions
 - ▶ Possibility of emergency funding assistance
- ▶ County Assistance Available
 - ▶ Groundwater Level Measurements
 - ▶ Technical Assistance
 - ▶ Water Waste Enforcement
- ▶ This is likely just the beginning; Need to plan for future droughts

Groundwater Levels Laurel Glen, Soquel



Conservation and Restrictions

- ▶ Reduce Use by 20% since 2013 (state and County)
- ▶ Limit spray irrigation to 2 days per week 5 pm-10 am
- ▶ Automatic shut-offs on hoses
- ▶ No excessive runoff
- ▶ State makes it the responsibility of the water system to enforce
- ▶ Important to have a conservation curtailment plan for your system
- ▶ Good time to have and to use individual meters

Metering and Reporting

- ▶ Metering is required by Water Works Standards
- ▶ Meters are a good water conservation tool for both the user and the system
- ▶ Metering and reporting is required by SGMA
- ▶ Metered information helps to characterize pumping amounts and makes the groundwater model more accurate
- ▶ Unmetered water use is often over-estimated
- ▶ We intend to amend county code to require metering and annual reporting, with adequate time for implementation