



WELCOME "2015 - Q4 SC Small Water Systems Forum

▶ Opening Topics

- ▶ Introductions 7:00 - 7:10
- ▶ Sustainable Groundwater Management Act Update 7:10 - 7:20
- ▶ Metering Ordinance & Reporting Update 7:20 - 7:30

▶ New Topics

- ▶ Insurance & Liability for Water Systems: 7:30 - 8:30

Guest Speaker, Dustin Hardwick - CRWA

▶ Closing

- ▶ Topics for Next Meeting 8:30 - 8:40
- ▶ Mingle & Network 8:40 - 9:00

Sustainable Groundwater Management Act Update

Small Water System Forum - December 2, 2015
John Ricker, Water Resources Division Director

SGMA - Key Provisions

- ▶ Develop and implement a plan that will prevent undesirable results:
 - ▶ Chronic lowering of groundwater levels
 - ▶ Significant, unreasonable reductions in storage
 - ▶ Significant, unreasonable degradation of water quality, seawater intrusion
 - ▶ Significant, unreasonable depletion of surface water
- ▶ Groundwater Agency has authority and responsibility to:
 - ▶ Measure and potentially limit extraction (except for de-minimis users)
 - ▶ Levy fees to pay the cost of basin management and supplemental supply
 - ▶ Implement and enforce terms of the groundwater sustainability plan
- ▶ Requires involvement of stakeholders
- ▶ State oversight and action if locals fail to act

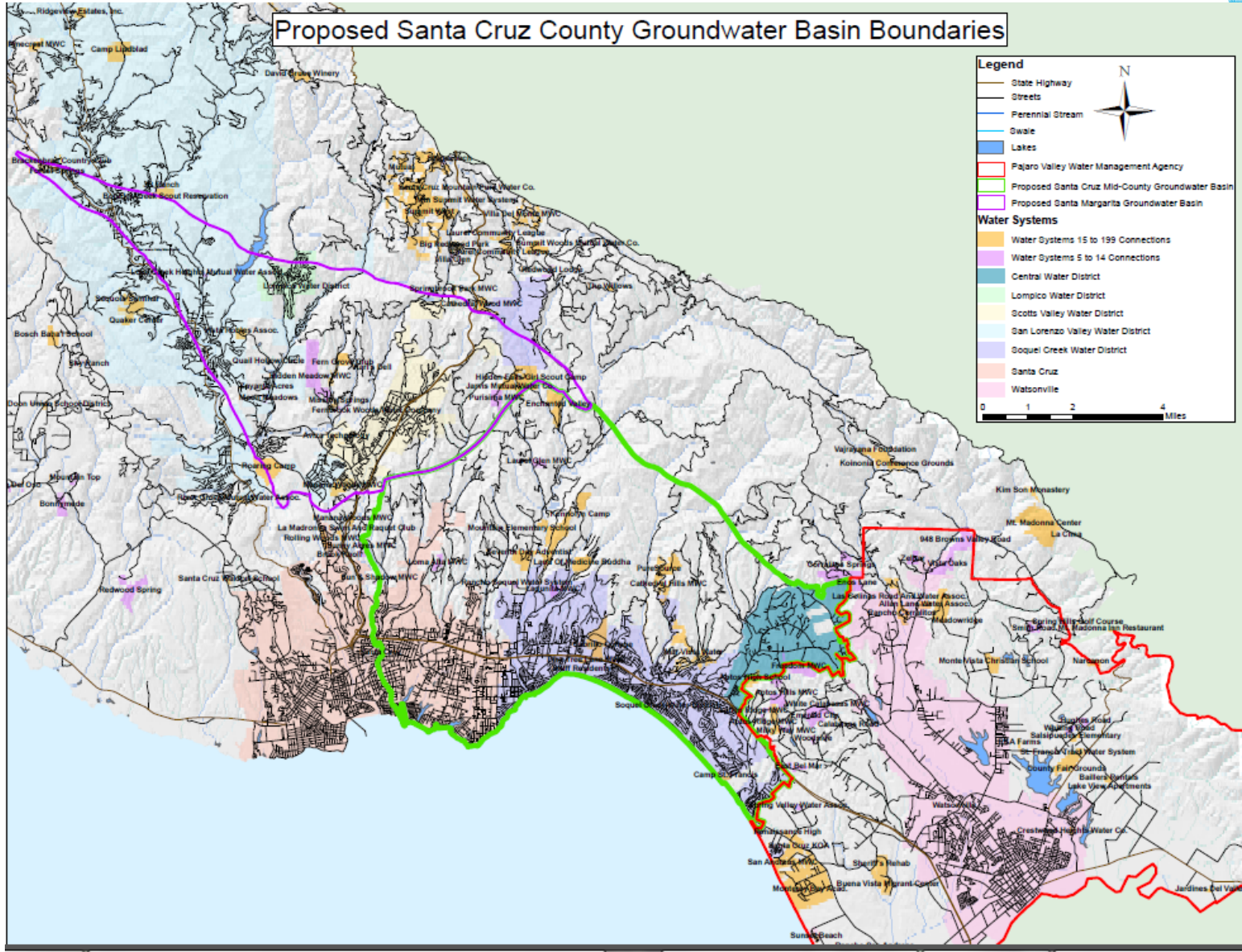
SGMA Status in Santa Cruz County

- ▶ Three Groundwater Basins of Concern in Santa Cruz County
 - ▶ Pajaro - PVWMA
 - ▶ Santa Cruz Mid-County
 - ▶ Santa Margarita
- ▶ Basin Modification Requests for Santa Margarita and Mid-County
- ▶ Management Committees already established
- ▶ Joint Powers Agreement for Santa Cruz Mid-County Groundwater Agency, March 2016
- ▶ Development of Groundwater Sustainability Plans by 2020, with Stakeholder input

Role of Small Water Systems

- ▶ Basin Boundary Modifications
 - ▶ Formal notification will be sent out to “affected systems” and systems in “affected basins”
 - ▶ The notice will include the website where the detailed basin boundary modification request can be reviewed.
 - ▶ Review of draft with comments back to local agency
 - ▶ 30 day formal review after request filed with state.
 - ▶ Letters or resolutions of support or opposition are encouraged and should be scientifically based.
 - ▶ A form letter template will be included in the notice and the website.
 - ▶ Please contact us for any informal comments or questions
- ▶ Participate in development of Groundwater Sustainability Plans

Proposed Santa Cruz County Groundwater Basin Boundaries



Legend

- State Highway
- Streets
- Perennial Stream
- Swale
- Lakes
- Pajaro Valley Water Management Agency
- Proposed Santa Cruz Mid-County Groundwater Basin
- Proposed Santa Margarita Groundwater Basin

Water Systems

- Water Systems 15 to 199 Connections
- Water Systems 5 to 14 Connections
- Central Water District
- Lompico Water District
- Scotts Valley Water District
- San Lorenzo Valley Water District
- Goqui Creek Water District
- Santa Cruz
- Watsonville

0 1 2 4 Miles

SGMA - Key Dates

- ▶ January -March, 2016 - Basin Boundaries updated
- ▶ January 1, 2016-June 30, 2017 - Local GSA's formed
- ▶ January 31, 2020 - GSP's completed for basins in critical overdraft
- ▶ Annually - GSA submits report on elevation, extraction, storage
- ▶ 2040 - 20 years after plan adoption: sustainability achieved

- ▶ For more info: www.midcountygroundwater.org

- ▶ Mid-County Groundwater Stakeholder Meeting. December 10
Live Oak Grange, 7:00 pm

Metering Ordinance Update- Monthly Usage Reporting

Small Water Systems Forum - December 2, 2015

Metering and Reporting Deadlines

- ▶ **October 1st, 2015: Meter installed on each water source**
- ▶ **January 15th, 2016:**
 - ▶ Monthly usage totals reported, as available, back to January 2013
 - ▶ Community Water Systems: Submit plan for connection meter installation
- ▶ **October 1st, 2017: Connection meters installed (Community Water Systems)**

Usage Reporting Options

- ▶ New reporting option: SurveyMonkey (online submittal)
 - ▶ Coming soon, to be announced
- ▶ Reporting form for email or hard copy mailing available on website:
 - ▶ Excel spreadsheet
 - ▶ PDF
 - ▶ Link: http://scceh.com/Home/Programs/ConsumerProtection/Programs/DrinkingWaterRegulatoryProgram/System_Metering.aspx

Usage Reporting- SurveyMonkey



Health Services Agency- Environmental Health Division
Small Water System Monthly Usage Reporting

System Information

Please fill out the data below for the system you manage:

* 1. System Name:

2. State ID# (4400_ _ _):

* 3. Operator/Primary Contact Name:

4. Operator/Primary Contact Phone Number:

5. Operator/Primary Contact Email Address:

* 6. How many sources does your system have?

Usage Reporting- SurveyMonkey



Health Services Agency- Environmental Health Division
Small Water System Monthly Usage Reporting

System Meter Information

Please add information about the meter you have installed on your source.

7. Source Name (e.g. Well #1, _____ Creek, Spring):

8. What is the meter type (make and model)?

*** 9. What are the units of the meter?**

10. When was the meter installed?

Date: ^{MM} / ^{DD} / ^{YYYY}

*** 11. Number of connections on source:**

Usage Reporting- SurveyMonkey

- ▶ Test version:

- ▶ https://www.surveymonkey.com/create/survey/preview?r=true&sm=776cqX_2BGmknAvAwPE_2BHSkgclIDbhgopu_2BgmnsCknwn947CciH74Jxwxxi0B8tjj_2BVTj_2FA5IPumH754XtJYtZsw_3D_3D_or

- ▶ email: Nathan.Salazar@santacruzcounty.us